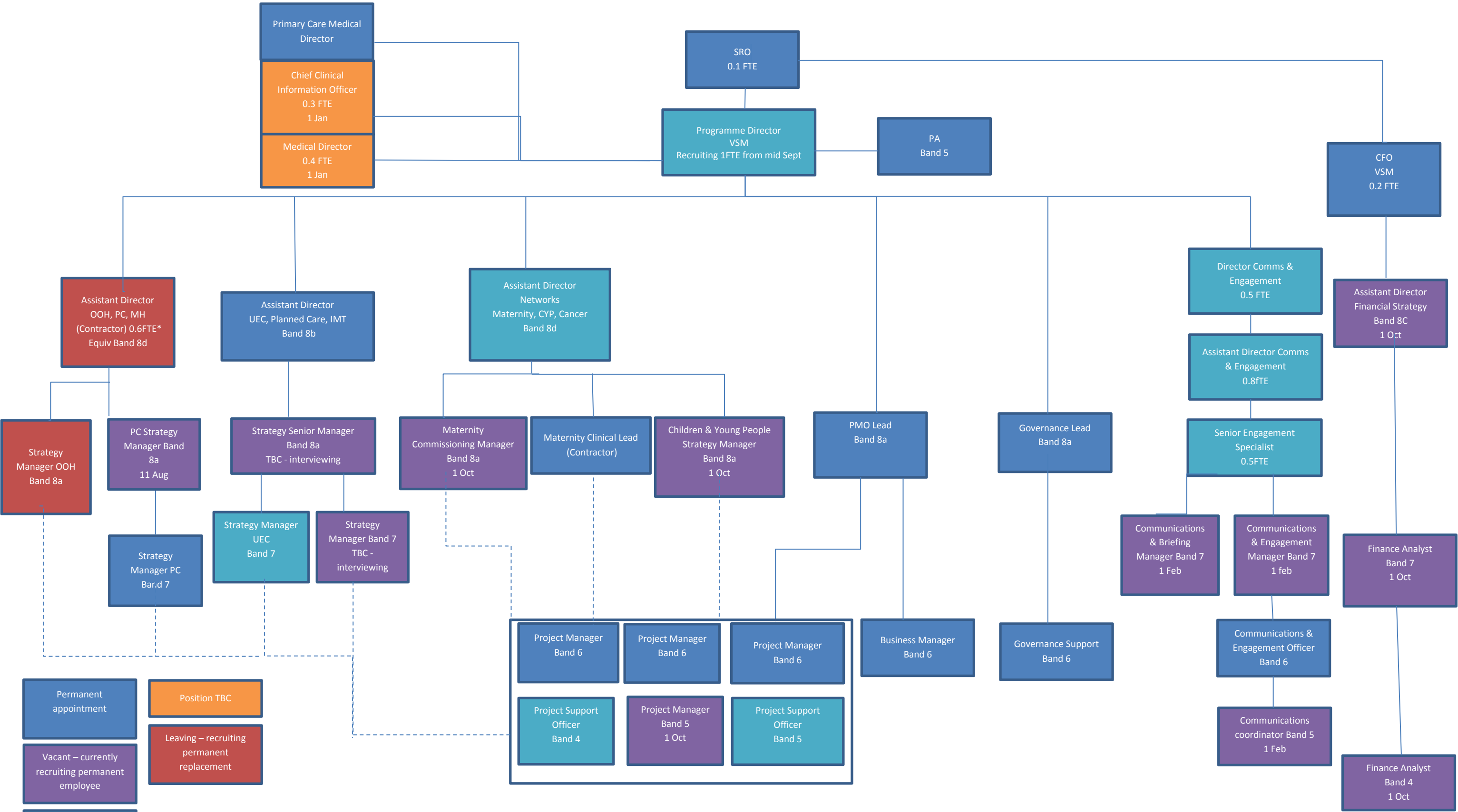


Who works for south west London Collaborative Commissioning?



Permanent appointment

Position TBC

Vacant – currently recruiting permanent employee

Leaving – recruiting permanent replacement

Temp in post – currently recruiting permanent employee

*Stepping down from OOH end Aug. Leaving end Sept
** Covering MH until new AD appointed

20/08/2015

V.01 FINAL