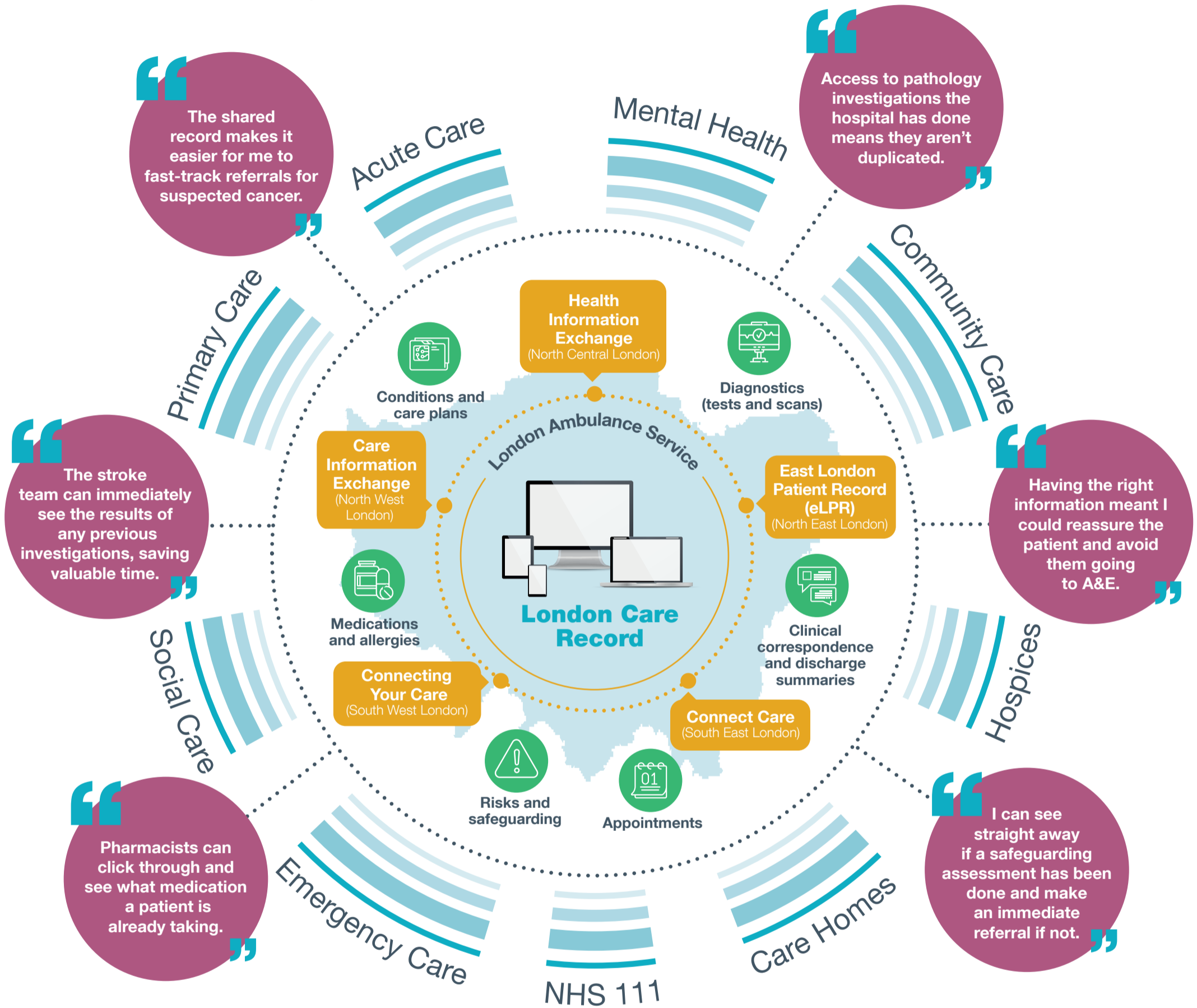


# London Care Record

The London Care Record brings together an individual's information from health and care services across London. It's available as a click-through from your local electronic care record system, so there are no new usernames or passwords to remember.



<b>9m</b> people	<b>1,400</b> general practices	<b>Over 40</b> NHS trusts	<b>33</b> local authorities
---------------------	-----------------------------------	------------------------------	--------------------------------

**one shared care record**